

JW6-252 Outdoor High Voltage Earthing Switch

General

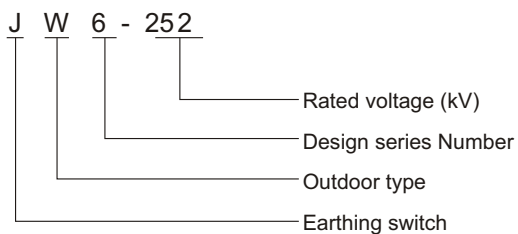
JW6-252 Outdoor high voltage earthing switch is three phase AC 50Hz high voltage electric equipment, used in checked busbar and electric equipment earthing to keep people safe, worked as transformer neutral earthing switch as well, which is widely used power system, industrial and mineral enterprise, each quota conforms to IEC62271-103 & confirm GB1985-2004 HV AC disconnect switch and earthing switch DL/T593-2006 Technical Guide of order for HV AC disconnect switch Request.



Service condition

1. Sea altitude do not exceed 2000M
2. Ambient temperature: -40°C~+40°C
Daily temperature difference: ≤32K
3. Wind pressure do not exceed 700Pa, (equivalent to wind speed 34 m/s)
4. Earthquake do not exceed 9 degree
5. Ice thickness: ≤10mm
6. Pollution degree: I degree pollution area (To earth creepage distance 16mm/kv)
II degree pollution area (To earth creepage distance 20mm/kv)
III degree pollution area (To earth creepage distance 25mm/kv)
IV degree pollution area (To earth creepage distance 31mm/kv)
According to actual pollution degree adopt correspondense creepage distance product.
7. Flammable and explosive site is inadvisable

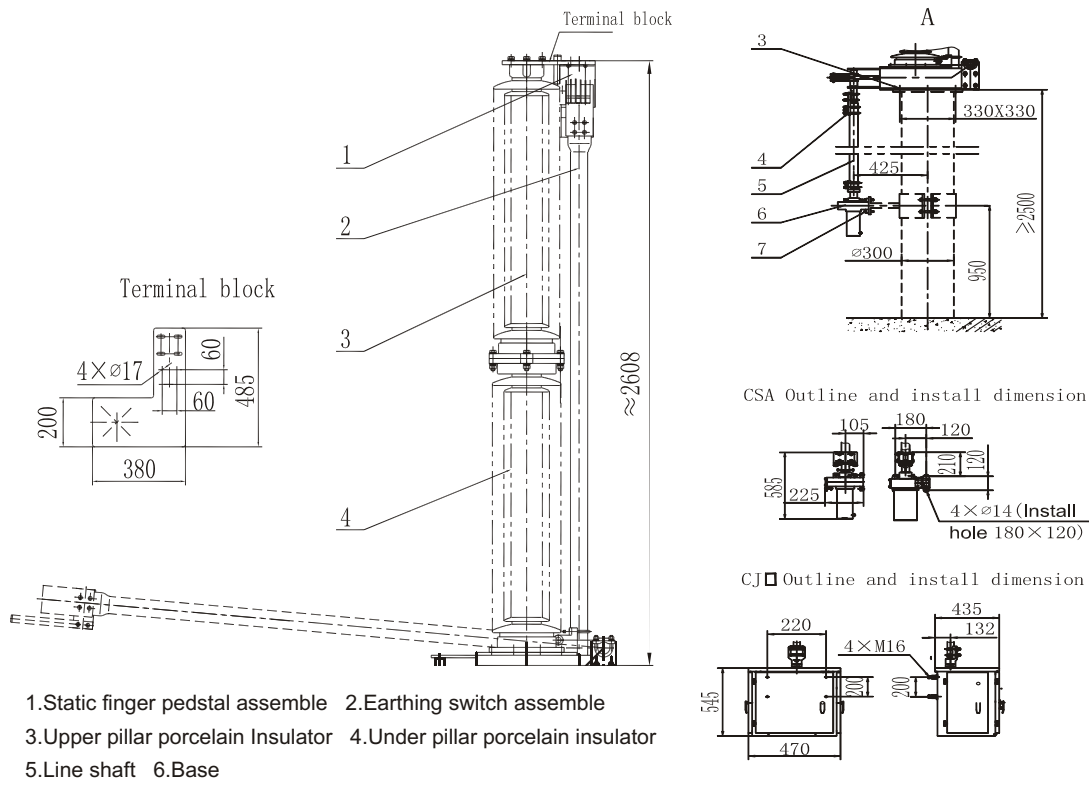
Model



Technical parameter

4.1 Earthing switch technical parameter

Description	Parameter
Rated voltage (kV)	252
Rated short-time withstand current (kA)	63
Rated short-time withstand duration (s)	3
Rated short-time withstand current (peak)	160
1 min power frequency withstand voltage (effective kV)	460
Lightning impulse withstand voltage (peak kV)	1050



Drawing 1 Single-pole switch structure drawing

